

# 协普 | SHIPE

## 企业宣传介绍 | Company Introduction

芜湖市协普机器有限公司

WUHU SHIPE MACHINE CO., LTD.

总部地址：中国（安徽）自由贸易试验区芜湖片区永昌路10号

HQ Add. :No. 10 Yongchang Road, Wuhu District, Pilot Free Trade Zone (Anhui) China.

# 目录

Contents

01 | 公司介绍  
Company Profile

02 | 产品介绍  
Product Introduction

03 | 生产和管控流程  
Production & Quality Control Process

04 | 合作项目  
Cooperation Project



# 公司介绍

Company Profile

第一部分  
PART ONE



协普总部制造基地，自**2022年4月**正式启用屋顶太阳能自发电项目，开启清洁能源时代。  
在协普，我们始终秉持环保发展模式开展业务，以帮助世界变得更美好。

SHIPE own manufacture base in WUHU, beginning with solar power generation completed since April 2022, with Clean Energy.  
Here at SHIPE, we prioritize environmentally-friendly practices in our business to help make the world a better place.



**芜湖协普总部**  
SHIPE Headquarter. in Wuhu



**研发中心，制造基地**  
R&D Center, Manufacture base

芜湖市协普机器有限公司始创于1999年，是一家集研发、制造、营销和售后服务于一体，拥有高端船舶配套产品品牌的集团公司。公司先后通过了国军标质量体系认证、CCS质量体系认证以及安全生产标准化认证。

20多年行业经验，30多项产品专利资质，产品远销15个海内外国家及地区。公司主营规模化产品，包括邮轮配套、电气设备及定制化产品等。其中折叠床、船用镜柜、镜前灯、筒灯等系列产品，已成为国内外船舶行业主流客户的首选，并广泛应用于豪华邮轮市场，相继为地中海邮轮、皇家加勒比邮轮、中华复兴号、维京邮轮、极地邮轮、TT-LINE、STENA LINE、Finnlines等豪华邮轮、客滚船提供一体化内装配套产品服务。

公司经过二十余载的执着追求和创新发展，正不断跨步迈向品牌的新征程！

WUHU SHIPE MACHINE CO., LTD, was incorporated in 1999, is a research and development, manufacturing, marketing and after-sales service in one, with high-end ship accommodation products brand group company. We have successively passed the GJB Quality System Certification, CCS Quality Management System Certification and Safety Production Standardization Certification.

Over 20 years industry experiences, 30 product patent qualifications, sold into 15 countries and regions word widely. Our mainly scale products including cruise products, electrical equipment and customized products. Our products such as Pullman Bed series, Mirror Cabinets, Mirror Lights, etc., has become the first choice for main customers globally, and already widely used in luxury cruise market. We have successively provided integrated interior ancillary products and services for luxury cruises and ro-ro passenger ships such as MSC, RCL, ZHONGHUA FUXING, VIKING Line, POLAR CRUISE, TT Line, STENA Line, Finnlines and so on. In recent years, SHIPE has increased investment in new product research and development as well as introduction of electric technical personnel, including electric heater, distribution cabinet, marine lamp and other electrical accessories, which have been put into large-scale production.

After over 20 years persistent pursuit and innovative development, SHIPE is now striding forward to the new journey.

**珠海分公司**  
Zhuhai Branch



**机加工供应链中心，制造基地**  
Maching Center, Manufacture base

珠海分公司作为集团机械加工制造基地，目前已拥有一系列先进的CNC机加工设备和专业的检测设备。

Zhuhai Branch and manufacture base acts as one of the machining center, which has full seires of professional equipments platform for both maching and testing.

## 数控加工工作站 Automatic Process Platform

\*Upgrade since early 2022



光纤激光切割机  
Fiber laser cutting machine

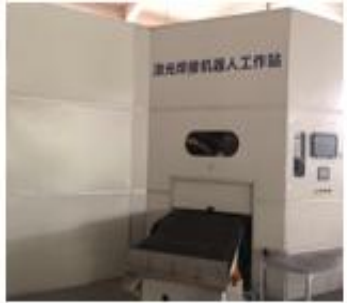


通快数控冲床  
TRUMPF's CNC punch



双机联动6轴数控折弯机  
6 axis CNC bending machine

## 全自动焊接工作站 Automatic Welding Platform



激光焊接机器人工作站  
Laser welding automation unit



焊接机器人工作站  
welding automation unit

## 金属表面处理工作站 Metal Surface Processing Platform

\*new invest since middle 2022



祥生金属去毛刺拉丝设备(自带除尘)  
Efficient metal deburring, edge rounding and finish machine



自动打磨机(\*自制)  
Automatic grinding machine (\*made by ourselves)



自动化喷涂生产线  
Automatic spraying production line



自动化木纹转印机  
Automatic wood grain printing transform machine

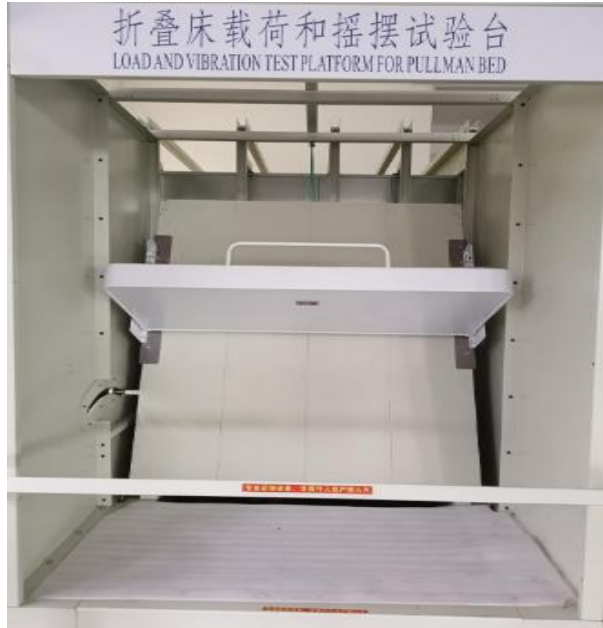
\*new invest since late 2021



自动化高温覆膜机  
Automatic high-temp. laminating machine

## 折叠床综合测试平台 (\*协普自制)

Pullman Bed Testing Platform (\*made by ourselves)



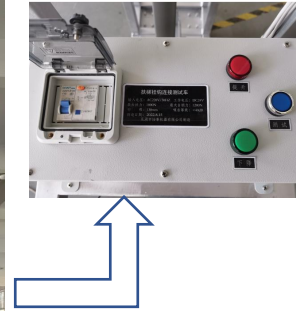
静/动载荷和摇摆试验台  
Loaded and Vibration Test Platform



疲劳(耐久)试验台  
Endurance Test Platform



扶梯拉力测试仪 (\*2022年引入并启用)  
Ladder Tension Test since Year 2022



## 气弹簧测试平台

Gas Spring Tension Equip.

\*2021年底引入



拉力测试仪  
Tension Tester



行程测试仪  
Stroke Tester

**\*2022年自制实验设备(自用)，计划于2023年3月初正式启用。  
New Test Experiment made by ourselevs will be lauched by early March.**

**1. 实验项目：沙发床软包耐久实验**

Sofa bed soft sofa Test Platform

**2. 检测标准/Test standard:**

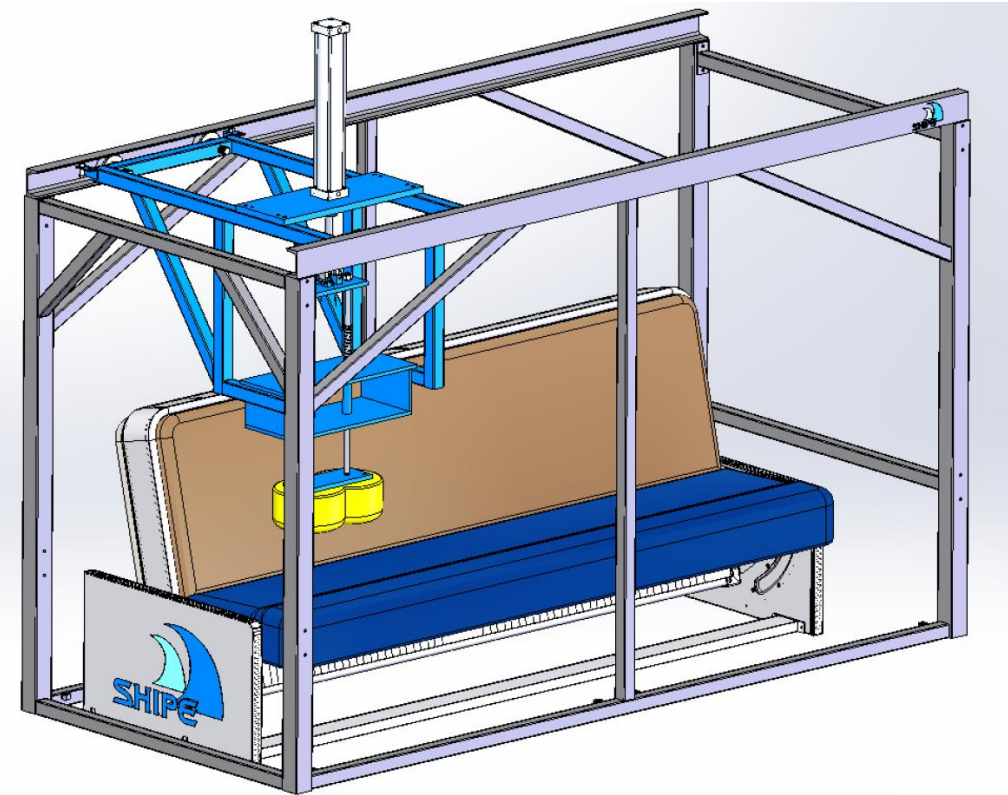
QB/T 1952.1-2012

**3. 实验要求/Test requirements:**

冲击软包面料60000次, 测试后面料无破损, 无褶皱起包, 海绵无塌陷。

After Impacting test (for 60K cycles contiously), the soft sofa surface is in good condition, without damage/ ruffle, and the sponge is keeping strong endurance and strong support.

**沙发床测试平台**  
Sofa Bed Testing Platform (\*New R&D Test Equip.)



**沙发床冲击实验设备**  
Sofa Bed Impact test Experiment



## 灯具(电气类)测试平台

Light (Electric Series) Testing Platform



光泽度仪与电器试验台  
Vancometer & Electrical test bench



积分球  
Integrating Sphere



灯具光电测试仪  
Photoelectric tester of lamps

## 通用测试平台

General Testing Platform



淋雨试验箱  
Rain test chamber



盐雾试验箱  
Salt test Chamber



振动试验台  
Vibration test bench



金属分析仪  
Metal analyzer



2.5次元投影仪  
Projector with Probe



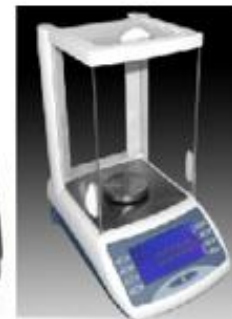
三坐标  
CMM

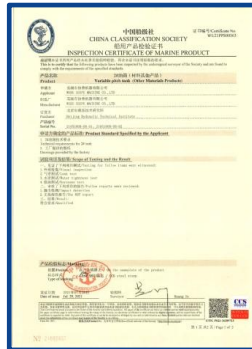
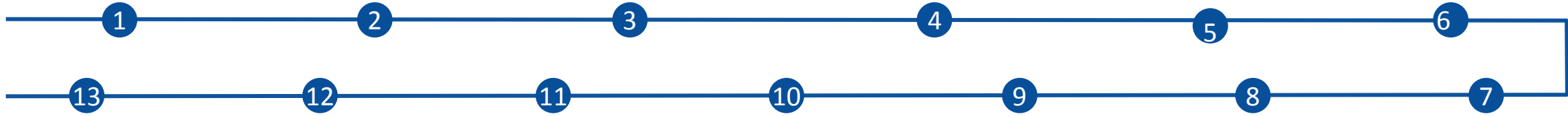
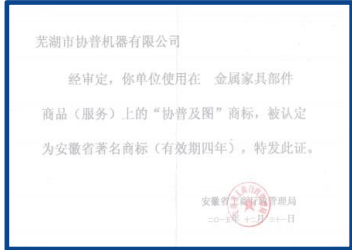


电子显微镜  
Microscope



高度规/色差仪/电子秤  
HG/Color Meter/E-Scale





1. 著名商标
2. A级纳税信用等级
3. 高新技术企业证书
4. 三级保密证书

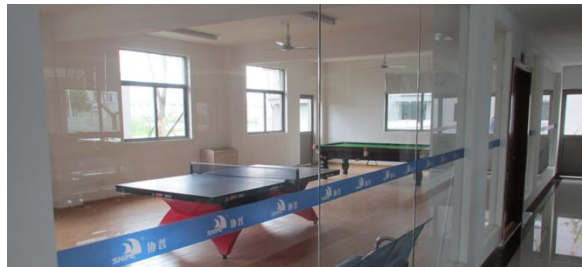
5. 国军标质量体系证书
6. 高新技术产品认定书
7. 发明专利证书
8. 实用专利证书

9. 外观专利证书
10. SGS证书
11. CE证书
12. CCS产品证书
13. 防护等级证书

1. Famous Trademark
2. Grand A Credurt Rating Certificate
3. High and New Technology Enterprise Certificate
4. Certificate of Confidentiality Level III

5. GJB Standard Quality System Certificate
6. High-tech Product Certificate
7. Invention Patent Certificate
8. Utility Model Patent Certificate

9. Design Patent Certificate
10. SGS Certificate
11. CE Certificate
12. CCS Product Certificate
13. Protection Class Certificate



研发楼  
R&D Buildings

生产车间  
Production Workshop

职工中心  
Staff Activity Center

## 展厅 Exhibition Hall



# 产品介绍

Product Introduction

第二部分  
PART TWO



该系列产品包括铝合金折叠床、沙发床、吸顶式折叠床、电动升降床、钢质双层床、钢质单层床、钢丝床等，

已广泛应用于豪华邮轮、客滚船。

折叠床安装在起居舱室舱壁上，可以折叠；

沙发床折叠后可以替代沙发使用，开启可以当床使用；

吸顶式折叠床可以收进天花板，开启与闭合具有助力缓冲功能充分利用和节省了船舶起居空间，安全、方便、美观。

每个系列产品都能满足静载荷、动载荷及疲劳试验等内控标准，使用寿命可达20年以上，因产品品质高端、价格合理，产品一经推出，迅速占领国内市外市场，在多个豪华邮轮项目上投入使用，成为国内最大的船用折叠床的供应商。

Bed series include Pullman bed, sofa bed, ceiling Pullman bed, electric lifting bed, steel bunk bed, steel single bed and spring bed.

They are mainly used for luxury cruise ships and ro-ro passenger ship.

Pullman bed is installed on bulkhead of cabin, it can be fold up and down.

Sofa bed can be used as sofa when fold up and as bed when down.

Ceiling bed can be colsed into ceiling. They make full usage of space in cabin and with safe, convenient and decorative feature.

Each series of products can meet the internal control standard of static load, dynamic load and fatigue test in our company standard and service life can reach more than 20 years. Those kinds of products quickly occupy the domestic market once launched because of the high quality and reasonable price.



## 折叠床系列 PULLMAN BED SERIES

A 型 铝合金折叠床  
A TYPE ALUMINUM PULLMAN BED



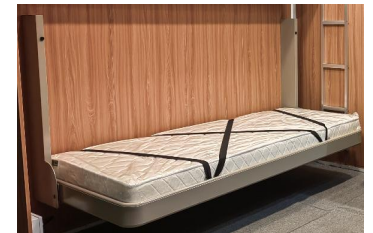
C 型 铝合金折叠床  
C TYPE ALUMINUM PULLMAN BED



### 产品信息：

品名：铝合金折叠床  
材质 Material：铝合金 Aluminum alloy  
型号 Type：A TYPE / C TYPE  
尺寸 Size：2000\*800mm / customized

### 折叠床 Pullman bed



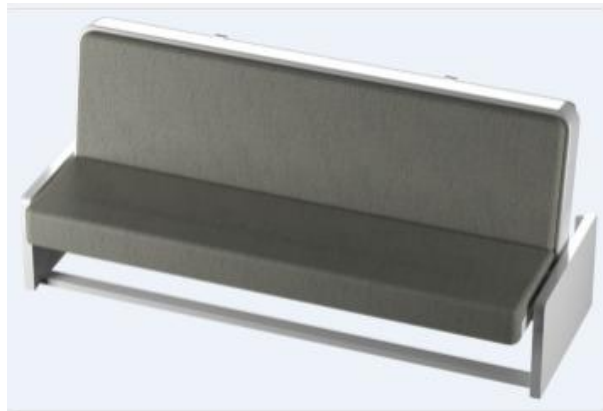
折叠床安装在起居舱室舱壁上，可以折叠，开启和闭合具有助力缓冲功能。  
Pullman bed is installed on bulkhead of cabin, it can be fold up and down, opening and closing with crusion feature.

## 沙发床系列 SOFA BED SERIES

壁挂式 沙发床  
WALL MOUNTED SOFA BED



落地式 沙发床  
FLOOR TYPE SOFA BED



### 沙发床 Sofa Bed



落地式、壁挂式可选：  
沙发床收放自如，打开是床铺，收起可作沙发使用。

**Floor and Wallmounted selection:**  
Sofa bed can be used as sofa when fold up and as bed when down,  
which is flexibility.

## \* 新研产品待上市 (New Product in Development)

### 产品信息:

**品名:** 吸顶式折叠床

**材质:** 铝合金

**型号:** 吸顶式

**操控模式:** 折叠操作 (上抬/下拉), 带锁

**表面处理:** 静电喷塑

**底板表面处理:** 喷塑 / PVC膜 / 贴画/木纹转印等

**特点和功能:**

吸顶式折叠床可以收进天花板, 开启与闭合具有助力缓冲功能, 充分利用和节省了船舶起居空间, 安全、便捷、美观。

### Product in details:

**Name:** Electric lifting pullman bed

**Material:** Aluminum alloy

**Type:** Ceiling type

**Operation mode:** Pullman bed, with Lock device.

**Surface Process:** Powder Coating /Wooden transfer printing selection

**Baseplate surface process selection:** Powder coating / PVC film / colorful sticker film/Wooden transfer printing etc.

**Special points and function:**

Ceiling Pullman bed can be closed into the ceiling, opening and closing with cushion feature, it makes full use of cabin space, with safe, convenient and decorative function.

## 吸顶式折叠床 Ceiling pullman bed





\* 新研产品待上市 (New Product in Development)

产品信息:

**品名:** 电动升降折叠床

**材质:** 铝合金

**型号:** 电动升降式

**操控模式:** 墙面开关/遥控开关可选; 带自限位装置

**表面处理:** 静电喷塑

**底板表面处理:** 喷塑 / PVC膜 / 贴画/木纹转印等

**特点和功能:**

电动升降折叠床可以收进天花板, 电启动开启和闭合功能, 自带机械安全限位, 有常规墙面开关和遥控双操控模式可选, 充分利用和节省了船舶起居空间, 安全、便捷、美观。

**Product in details:**

**Name:** Electric lifting pullman bed

**Material:** Aluminum alloy

**Type:** electric lifting ceiling type

**Operation mode:** Double long push Button/Remote control mode ;

With self limiting device.

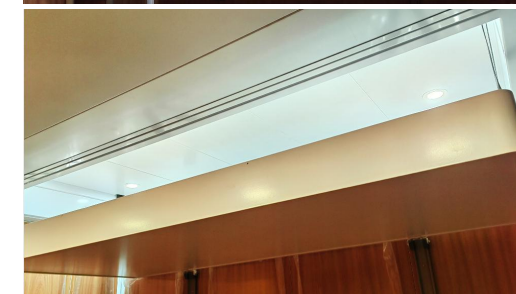
**Surface Process:** Powder Coating /Wooden tranfer printing selection

**Baseplate surface process selection:** Powder coating / PVC film / colorful sticker film/Wooden tranfer printing etc.

**Special points and function:**

Electric lifting pullman bed can be closed into the ceiling, opening and closing in electric operation, it has button and remote control modes, with safety mechanism, it makes full use of cabin space, with safe, convenient and decorative function.

## 电动升降折叠床 Electric lifting pullman bed



**墙面开关模式**  
( 双击长按 )  
**Double long push Button**



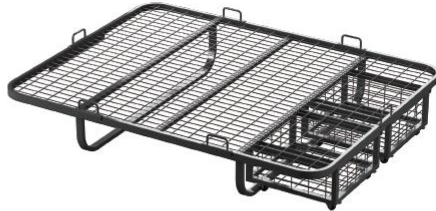
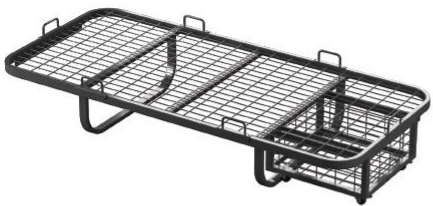
**遥控开关模式**  
( 双击操作, A代表升/B代表降, )  
**Remote control mode**  
A indicates up,  
B indicates down

## 钢质床 STEEL BED



钢质单层床  
Steel single-berth bed  
材质：镀锌钢板  
Material: Galvanized steel

钢质双层床  
Steel bunk bed  
材质：镀锌钢板  
Material: Galvanized steel



钢丝单人床  
Steel wire single bed  
材质：镀锌钢  
Material: Galvanized steel

钢丝双人床  
Steel wire double bed  
材质：镀锌钢  
Material: Galvanized steel

## 综合试验 COMPREHENSIVE EXPERIMENT

床系列产品都能满足静载荷、动载荷及疲劳试验等内控标准，超出船舶行业一般标准，使用寿命可达20年以上。

Each products of bed series can meet the internal control standrad of static load, dynamic load and fatigue test, beyond the general standard of shpping products industry, and the service life can reach more than 20 years.

### 静载荷试验 | Static Load Test 350KGS



## 综合试验

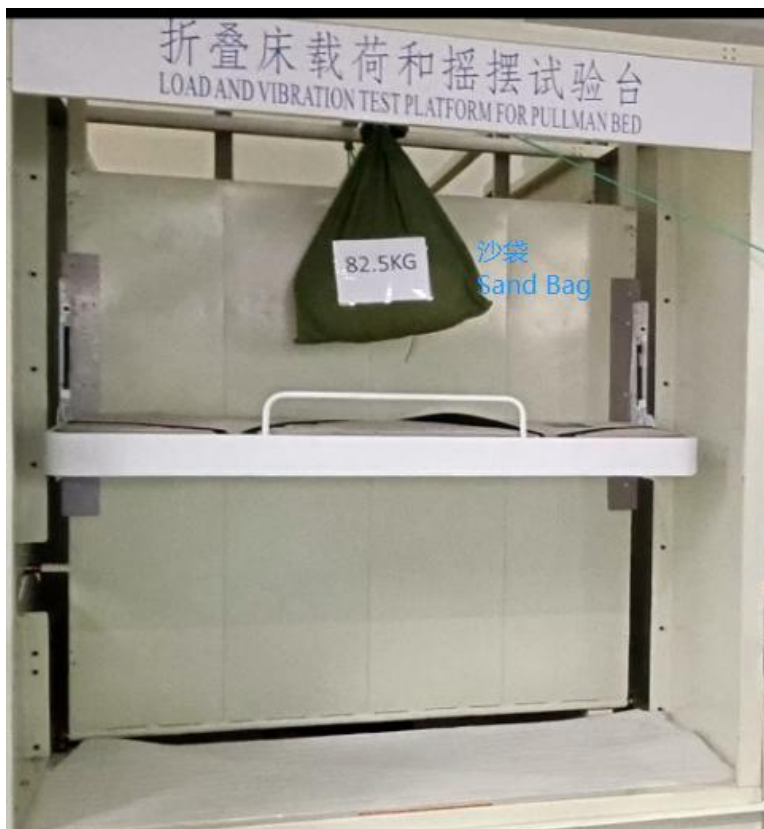
### COMPRHENSIVE EXPERIMENT

#### 动载荷试验 | Dynamic Load Test

82.5KGS

经测试后，床体结构中无永久变形、焊缝裂纹或紧固件松动。床体上下折叠平稳，无异常噪音和振动。经测试，加载和卸载过程中，床体终端部区域的偏差数值为0mm。

There is no permanent deformation, weld crack or loosening of fasteners in the structure. The bed can be folded up and down smoothly and no abnormal noise and vibration after test. Measure the deflection on the end region during load and unload process and value is 0mm.



#### 疲劳实验 | Fatigue Test

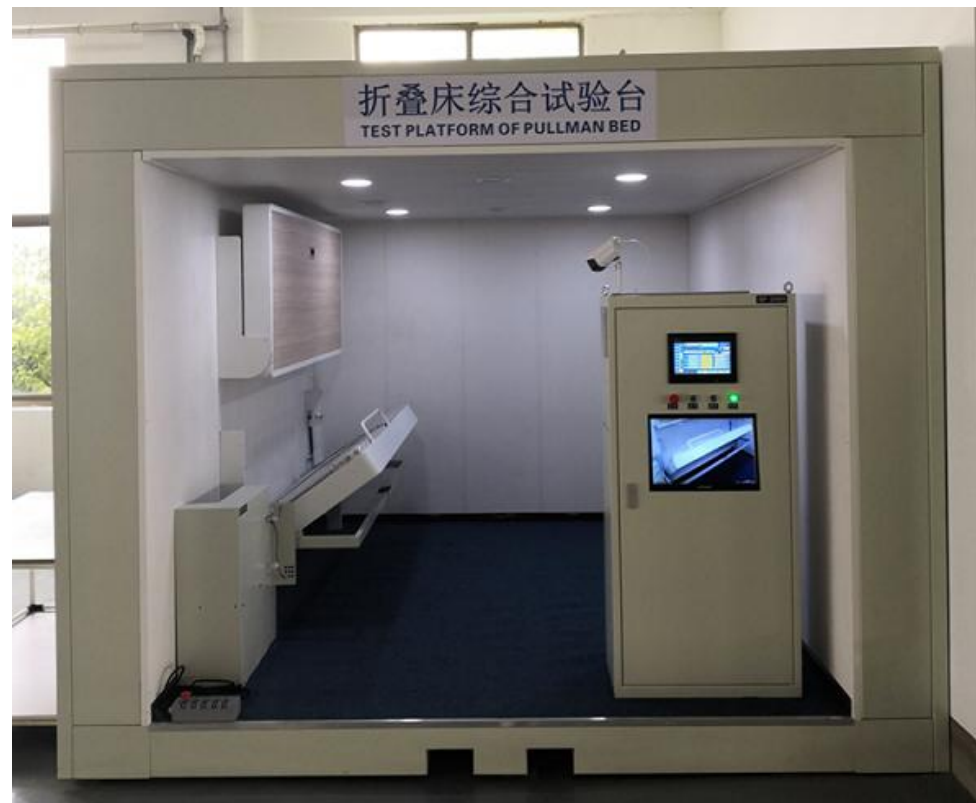
使用寿命 Service life :

5次/天\*365天/年\*20年=36500次 | 5times/day\*365days/year\*20years=36500times

开合次数 Opening and closing times : 40000次 | 40000 times

开合36500次后拆下检查关键部件的磨损和变形。床身结构无永久变形、焊缝裂纹、紧固件松动等情况，床身上下折叠平稳，经检测无异常噪音和振动。气泵橡胶垫片和轴销磨损轻微。

Disassemble the pullman bed after 36500 fold up-down and check the wear and deformation of some key component. There is no permanent deformation, weld crack or loosening of fasteners in the structure. The bed can be folded up and down smoothly and no abnormal noise and vibration after test. The rubber gasket and shaft pin of air pump was mild wear.



## 综合试验

### COMPRHENSIVE EXPERIMENT

#### 摇摆实验 | Vibration Test

摇摆角度 Vibration Angle: :  $\pm 25^\circ$

实验方法 Experimental Method : 15秒/周期 | 15S/Cycle

在摇摆过程中无异常开启现象。

There was no abnormal opening during the vibrating process.



#### 实验数据 | Test datasheet

实验得到的数据受到了国内外客户的高度认可。

Our bed series are highly recognized by foreign and domestic clients.

序号 No.	内容 Content	参数 Parameter	备注 Remark	实验结果 Test Result
1	外形尺寸 Dimension	2000*800m m	床框内框尺寸 Inner Dimension of Bed Frame	OK
2	产品重量 Weight	34.5kgs	不含床垫 Without metress	OK
3	上铺安装高度 Upper Mounting Height	1300mm	床框下沿距地面高度 Height between floor and bottom of bed frame	OK
4	下铺安装高度 Lower Mounting Height	400mm	床框下沿距地面高度 Height between floor and bottom of bed frame	OK
5	开合次数 Opening and Closing Times	40000次	使用寿命大于20年 5次/天  *365天/年*20年=36500次 Service Life more than 20years 5times/day * 20years=36500times	开合36500次后拆下检查关键部件的磨损和变形。床身结构无永久变形、焊缝裂纹、紧固件松动等情况，床身上下折叠平稳，经检测无异常噪音和振动。气泵橡胶垫片和轴销磨损轻微。  Disassemble the pullman bed after 36500 fold up-down and check the wear and deformation of some key component. There is no permanent deformation, weld crack or loosening of fasteners in the structure .The bed can be folded up and down smoothly and no abnormal noise and vibration after test. The rubber gasket and shaft pin of air pump was mild wear.
6	摇摆实验 Vibration Test	$\pm 25^\circ$	15秒/周期 15S/Cycle	在摇摆过程中无异常开启现象。 There was no abnormal opening during the vibrating process.
7	动载荷 Dynamic Load	85kgs	300mm高自由落体 Free Fall at 300mm	经测试后，床体结构中无永久变形、焊缝裂纹或紧固件松动。床体上下折叠平稳，无异常噪音和振动。经测试，加载和卸载过程中，床体终端部区域的偏差数值为0mm。
8	静载荷 Static Load	350kgs	保持30分钟 Loaded 30mins	There is no permanent deformation, weld crack or loosening of fasteners in the structure . The bed can be folded up and down smoothly and no abnormal noise and vibration after test. Measure the deflection on the end region during load and unload process and value is 0mm.

## 折叠床关键配套产品关联试验 KEY COMPONENTS SPECIAL TEST

### 1、扶梯挂钩拉力测试仪（如图1） Ladder tensile test vehicle (as image #1)

为了有效验证折叠床扶梯打胶固化，确保扶梯使用的功能性及安全性，公司于2022年7月自主研发了**扶梯拉力测试仪**，通过自动化操作替代传统检测手法，可以批量全面检测扶梯装配牢固度。

In order to effectively verify the glue curing of the pullman bed ladder and ensure the functionality and safety of the ladder, we have independently developed the ladder tensile test vehicle in July 2022. By replacing the traditional testing method with automated operation, it can comprehensively inspect the ladder assembly in mass production.

负载55KGs进行拉力循环检测；  
经测试后，梯子无变形、挂钩拼接处无裂纹、无松动。

Load 55KGs tensile cycle testing;

After testing, there is no deformation on ladder and no crack, no looseness at the splicing of the ladder hook.

### 2、气弹簧力值及行程测试仪（如图2） Gas Spring tensile & stroker tester (as image#2)

为了有效验证折叠床开启闭合翻转速度和行程在设定标准内，设计和引入气弹簧检测仪器做监测，以确保批量气弹簧在装配折叠床前各项参数指标符合验收标准。

In order to effectively verify the pullman bed folded up and down function, like the opening and closing turnover speed and stroke of the pullman bed are within the set standard, the gas spring detection instrument is designed and introduced to monitor, in order to ensure that the batch gas spring parameters before assemble of the pullman bed is in line with acceptance standards.



扶梯拉力测试仪  
Ladder Tension Test since Year 2022

拉力测试仪  
Tension Tester

行程测试仪  
Stroke Tester

图1 ( image#1 )

图2 ( image#2 )

该系列产品包括豪华邮轮镜柜、集成全铝镜柜、浴柜、化妆镜等,已广泛应用于豪华邮轮、客滚船和军方市场。

**豪华邮轮镜柜:** 针对豪华邮轮舒适、奢华的特点,产品在造型、配件选用、外观处理等方面凸显个性、精益求精,受到国外客户广泛认可。应用于高端船舶市场。

**集成全铝镜柜、浴柜:** 具有重量轻、防火、防水、防腐、防虫,无甲醛、环保可回收等优点,并在产品内部集成了LED照明、防雾、杀菌消毒、毛巾烘干、时间显示、无线连接等系列选配功能,安全、便利、实用、智能。

**化妆镜:** 采用优质环保无铜镜,以更好的应用于潮湿等恶劣环境。并集成了安全低压LED照明、防雾等功能,画面清晰、功能实用、造型时尚、安全可靠。

Mirror cabinet series include Cruise mirror cabinet, Naval mirror cabinet, Aluminum integrated mirror cabinet, Bathroom cabinet, cosmetic mirror and etc., has widely used for luxury cruise, ro-ro passenger ships and military market.

**Cruise Mirror Cabinet:** Focus on style, accessories and appearance of cabinet according to the characteristics of comfort and luxury of cruise. Personalized design and first class quality make our products widely recognized by foreign clients. It applies in high end vessel market.

**Aluminum integrated mirror cabinet, bathroom cabinet:** With light weight, fireproof, waterproof, anti-corrosive, insect-proof non-formaldehyde, environment-friendly and recyclable advantages. Customers can choose some optional functions, such as integrated LED lighting, defogger, sterilization, towel drying, time display, wireless connection and others. It's safe, convenient, practical and intelligent.

**Cosmetic Mirror:** Adopt high quality, environment-friendly, copper free mirror to better apply to moist and bad environment, It is integrated with the functions of safe low pressure LED lighting anti-fog and other functions. Clear and bright picture quality, practical function and fashion design.



## 豪华邮轮镜柜 CRUISE MIRROR CABINET



铝合金镜柜  
Aluminum Mirror Cabinet  
材质 Material :  
铝合金 Aluminum alloy  
型号 Type : CM382-  
LAS+CL8W  
尺寸 Size:  
382\*590\*223mm

铝合金镜柜  
Aluminum Mirror Cabinet  
材质 Material :  
铝合金 Aluminum alloy  
型号 Type : CM520-  
DAS+CL2\*9W  
尺寸 Size:  
520\*590\*223mm



铝合金镜柜  
Aluminum Mirror Cabinet  
材质 Material :  
铝合金 Aluminum alloy  
型号 Type : CM645-  
DAS+CL18W  
尺寸 Size:  
645\*614\*250mm

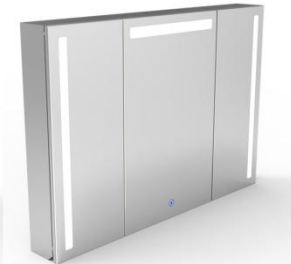
## 船用镜柜 MARINE MIRROR CABINET



JM400



JM600



DM900



BM600



CM295A



FM490



CM382A/CM410A



CM382/CM486



CM648



AM350-LSP



AM600-DSP



AM900-DSP&AM1200-DSP

## 浴室柜 BATHROOM CABINET



JM0810 JYG1200-A



AM800 JYG900



AM400 JYG600



AM1200 JYG1400



JYG750-A



JYG1500-A

## 化妆镜 COSMETIC MIRROR



JM0608



JM0711A



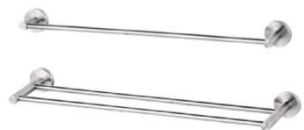
JM0611



JM0612







不锈钢单/双杆毛巾架  
Stainless steel  
single/double towel bar



不锈钢浴巾架  
Stainless steel  
towel bar



不锈钢化妆品托架  
Stainless steel  
cosmetic shelf



不锈钢防撞扶手  
Stainless steel  
bathroom handrail



镀锌钢板/不锈钢抽风头  
Galvanized steel / Stainless steel exhaust valve



不锈钢手纸盒  
Stainless steel  
tissue box



不锈钢手纸架  
Stainless steel  
tissue holder



不锈钢皂篮  
Stainless steel  
tissue holder



不锈钢地漏  
Stainless steel  
floor drain



不锈钢废纸篓  
Stainless steel trash can



不锈钢单杯架  
Stainless steel  
single tooth cup-holder



不锈钢双杯架  
Stainless steel  
double tooth cup-holder



不锈钢衣帽钩  
Stainless steel  
coat hook



不锈钢马桶刷  
Stainless steel  
toilet brush



不锈钢抽风头  
Stainless steel exhaust valve



水箱  
Toilet water tank

**协普采用先进的设计理念，精湛的加工工艺，为客户定制各种电气设备。**

**SHIPE adopt advanced design concept, exquisite processing technology, for customers to customize all kinds of electrical equipment series.**

配电箱、电加热器、船用灯具及电气附件，已成为邮轮配套系列产品之一。其中，船用 LED 照明灯具将 LED 照明技术应用于船舶照明之中，重量轻、无噪音、无干扰、节能高效。如：LED 舱顶灯、蓬顶灯、D 型天花板灯、镜前灯等。D 型天花板灯与 D 型天花无缝结合，形成整体，美观，安装方便。

**Distribution box, Electric heater, Marine light and Electric accessories, has being one of the key serie of curise products.**

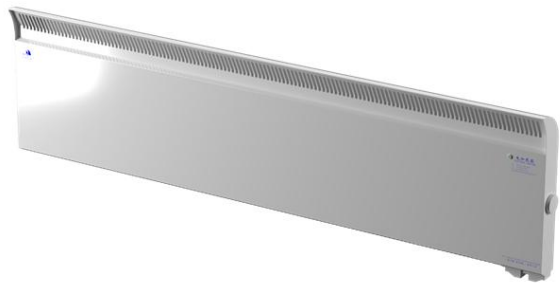
**Marine LED light apply LED lighting technology to marine light fixture, light weight, no electric noise, no interference, saving energy with efficiency, such as LED pendent light, ceiling light, D type ceiling light, mirror light and so on. Especially the D type ceiling light math with D type ceiling, totally match, no gap to be a entirety beautiful appearance and easy to install.**



## 电加热器系列 ELECTRIC HEATER SERIES



电加热器  
Electric Heater  
材质 Material :  
镀锌钢板 Galvanized Steel  
型号 Type :  
CDRQ  
300w/400w/500w/600w/800w  
参数 Parameter :  
220-230v 50hz/60hz



电加热器  
Electric Heater  
材质 Material :  
镀锌钢板 Galvanized Steel  
型号 Type :  
CDRQ 1000w/1200w/1500w/2000w  
参数 Parameter :  
220-230v 50hz/60hz

## 配电箱（接线箱）系列 JUNCTION BOX SERIES



船用接线箱  
Marine junction box  
型号/Type: JXT12-1  
材质:镀锌钢板  
Material: Galvanized steel sheet  
防护等级/Protection class: IP56  
产品可定制/Product customizable



不锈钢接线箱  
Stainless steel junction box  
型号/Type: JXT12-5  
材质:不锈钢  
Material: Stainless steel  
防护等级/Protection class: IP56  
产品可定制/Product customizable



船用接线箱  
Marine junction box  
型号/Type: WJ1  
材质:不锈钢  
Material: Stainless steel  
防护等级/Protection class: IP56  
产品可定制/Product customizable

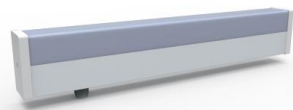


船用接线箱  
Marine junction box  
型号/Type: WJ2  
材质:不锈钢  
Material: Stainless steel  
防护等级/Protection class: IP56  
产品可定制/Product customizable

## 船用灯具 MARINE LAMP



LED/荧光 镜前灯 LED/Fluorescent mirror light  
型号/Type:CL7W\*\*\*\*A(LED)  
CL15W\*\*\*\*A(荧光/Fluorescent)  
尺寸/Size:486x113x66(mm)  
防护等级/Protection class:IP44



LED镜前灯 LED mirror light  
型号/Type:CL18W000(18W)  
尺寸/Size:648x113x63(mm)  
防护等级/Protection class:IP44



LED/荧光 镜前灯 LED/Fluorescent mirror light  
型号/Type:CL7W\*\*\*\*B(LED)  
CL15W\*\*\*\*B(荧光/Fluorescent)  
尺寸/Size:486x141.5x63(mm)  
防护等级/Protection class:IP44



荧光镜前灯 Fluorescent mirror light  
型号/Type:CB11W110B(11W)  
尺寸/Size:316x116x77.5(mm)  
防护等级/Protection class:IP44



荧光镜前灯 Fluorescent mirror light  
型号/Type:CB14W011A(14W)  
尺寸/Size:800x120x62.2(mm)  
防护等级/Protection class:IP44



荧光壁灯 Fluorescent wall light  
型号/Type:CL18W000C(18W)  
尺寸/Size:650x113x63(mm)  
防护等级/Protection class:IP44



LED/荧光 壁灯 LED/Fluorescent wall light  
型号/Type:CB7W(7W-LED)  
CB15W(15W-荧光/Fluorescent)  
尺寸/Size:517x125x65(mm)  
防护等级/Protection class:IP44



LED/荧光 走道灯 LED/Fluorescent corner light  
型号/Type:JBL7-1(7W-LED)  
JBY15-1(15W-荧光/Fluorescent)  
尺寸/Size:673x125x125(mm)  
防护等级/Protection class:IP44



LED床头灯 LED ceiling light  
型号/Type:JTL04-1(4W)  
尺寸/Size:332x90x43(mm)  
防护等级/Protection class:IP34



LED床头灯 LED bedside light  
型号/Type:JTL09-1(9W)  
尺寸/Size:230x170x65(mm)  
防护等级/Protection class:IP44



LED壁灯 LED wall light  
型号/Type:CB9-300(9W)  
尺寸/Size:300x390x86(mm)  
防护等级/Protection class:IP20



荧光筒灯 Fluorescent downlight  
型号/Type:CWTD-6C(18W/2x18W)  
尺寸/Size:φ210x355x100(mm)  
防护等级/Protection class:IP44



荧光筒灯 Fluorescent downlight  
型号/Type:CWTD-5C(13W/18W/2x13W/2x18W)  
尺寸/Size:φ177x393x77.5(mm)  
防护等级/Protection class:IP44



LED筒灯 LED downlight  
型号/Type:CWTD-6L-B(9W)  
尺寸/Size:φ210(mm)  
防护等级/Protection class:IP44



LED筒灯 LED downlight  
型号/Type:CWTD-6L-A(9W)  
尺寸/Size:φ177(mm)  
防护等级/Protection class:IP44



LED筒灯 LED downlight  
型号/Type:CWTD-6L-180(9W)  
尺寸/Size:φ180(mm)  
防护等级/Protection class:IP44  
产品可定制/Product customizable



LED筒灯 LED downlight  
型号/Type:CWTD-6L-180S(9W)  
尺寸/Size:φ180x180x50(mm)  
防护等级/Protection class:IP44  
产品可定制/Product customizable



LED/荧光 蓬顶灯 LED/Fluorescent ceiling light  
型号/Type:JPL11-2(2x9W-LED)  
JPY21-2(2x20W-荧光/Fluorescent)  
防护等级/Protection class:IP44 产品可定制/Product customizable



LED/荧光 蓬顶灯 LED/Fluorescent ceiling light  
型号/Type:JPL10-2(2x9W-LED)  
JPY20-2(2x20W-荧光/Fluorescent)  
防护等级/Protection class:IP44 产品可定制/Product customizable



LED/荧光 蓬顶灯 LED/Fluorescent ceiling light  
型号/Type:JPL11T-2(2x9W-LED)  
JPY21T-2(2x20W-荧光/Fluorescent)  
防护等级/Protection class:IP44 产品可定制/Product customizable



LED/荧光 舱顶灯 LED/Fluorescent pendant light  
型号/Type:JCL12-2(2x9W-LED)  
JCY22-2(2x20W-荧光/Fluorescent)  
防护等级/Protection class:IP55



LED/荧光 舱顶灯 LED/Fluorescent pendant light  
型号/Type:JCL13-2(2x9W-LED)  
JCY23-2(2x20W-荧光/Fluorescent)  
防护等级/Protection class:IP55




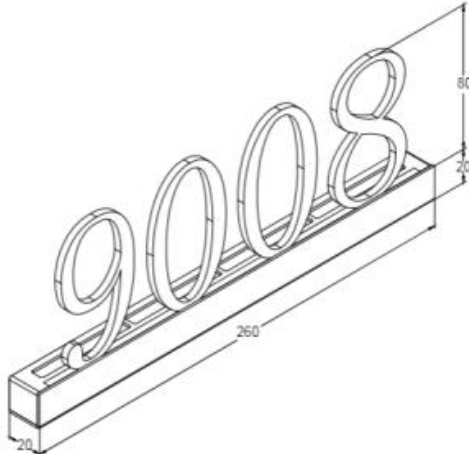
LED舱顶灯 LED pendant light  
型号/Type:CCD9-5(9W)  
防护等级/Protection class:IP56

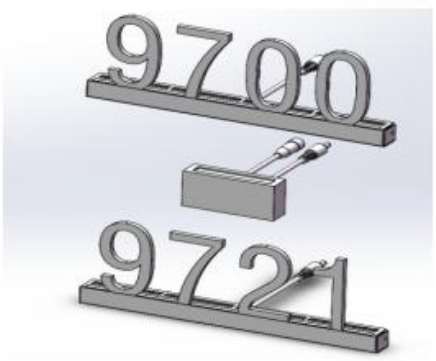
## 门牌灯

### Metal Door Numbers, LED Lamp

model # MD-90



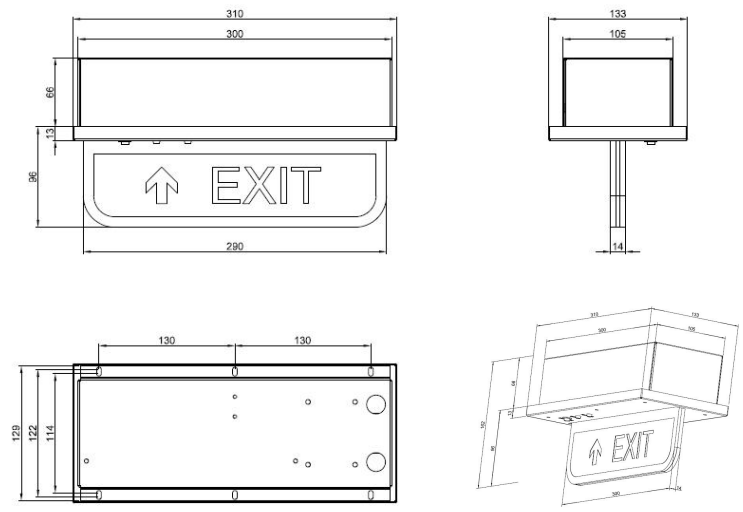
 TECHNICAL CHARACTERISTICS技术参数表		PICTURE 图示 
PRODUCT 品名: 金属门牌灯, LED灯源 Metal door numbers, LED lamp TYPE 型号: MD-90		
ELECTRICAL NETWORK 电气参数		DATA 数据
Voltage 电压		220-240V
Frequency 频率		50/60Hz
Power used 使用功率		30W
Power factor 功率因素		0.502
Light source included 含光源		是 (Y)
LIGHT SOURCE 光源		
Transformer Maker 电源制造商		欧司朗 Osram
Quantity 数量		1拖1, 1拖2, 或1拖3, 根据实际需求来适配 (One power driver with one or two or three sets, according to actual needs)
light source type 光源类型		LED
Power 功率 (W)		4.52W
Color temperature 色温		3000K
Luminous 整体光效 (非灯带光效)		20.8lm/W
Luminous flux 光通量		93.98lm
CHARACTERISTIC 特征		
Signage Font 数字字体		Arial
Signage Font 数字厚度		4mm
Signage/Base material 数字/底座材质		不锈钢(304 Stainless Steel)
Signage/Base finishing 数字/底座表面处理		拉丝或喷塑(Brsuhed or Spraying)
Weight 重量		0.56Kg



## 逃生指示灯 Escape Light



<b>WUHU SHIPE MACHINE CO.,LTD</b> TECHNICAL CHARACTERISTICS 技术参数表		
PRODUCT品名: 有机玻璃应急灯, LED光源, LED lamp TYPE型号: XP-YJD101		
ELECTRICAL NETWORK 电气参数	DATA 数据	PICTURE 图示
Voltage 电压	220-240V	
Frequency 频率	50/60Hz	
Batt 电池18650	放电大于3小时	
Power factor 功率因素	>0.65	
Light source included 含光源	是	
LIGHT SOURCE 光源		
Transformer Maker 电源制造商	协普/Customized	
Quantity 数量	3W	
light source type 光源类型	LED	
Power 功率 (W)	3W	
Color temperature 色温	6500K	
Luminous 整体光效 (非灯带光效)	15lm/W	
Luminous flux 光通量	50lm	
CHARACTERISTIC 特征		
Signage Font 数字字体	Customized	
Signage/Base material 数字/底座材质	有机玻璃	
Signage/Base finishing 数字/底座表面处理	表面绿色喷字	
Weight 重量	2.2Kg	





铜质接线盒 Copper wiring box  
 型号: JXH402  
 电压/Voltage: 250V  
 电流/Current: 10A/20A  
 防护等级/Protection class: IP56



接线盒 Junction box  
 型号/Type: JXF4-2  
 电压/Voltage: 250V  
 电流/Current: 10A/20A  
 防护等级/Protection class: IP56



塑料接线箱 Plastic junction box  
 型号/Type: JXT6-02  
 材质/Material: ABS  
 防护等级/Protection class: IP56



XP-100/2EM  
 XP-100/2EF



XP-100/5BM  
 XP-100/5BF



XP-100/6MP  
 XP-100/6FP



XP-200/B3T



XP-100/3BM  
 XP-100/3BF  
 XP-100/L



XP-100/3T  
 XP-100/3M



XP-100/3T  
 XP-100/3H



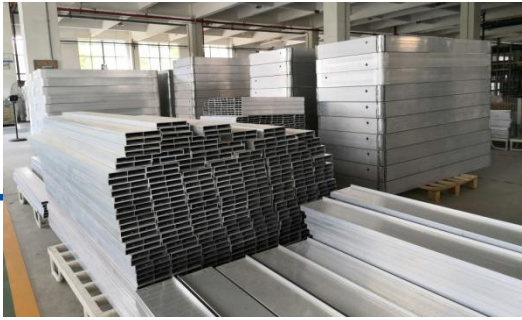
XP-100/6B

# 生产和质量 管控流程

Production & Quality  
Control Process

第三部分  
PART THREE





选材精良  
Excellent material selection



自动化CNC加工  
Automatic CNC machining



自动化数控冲  
Automatic impacting



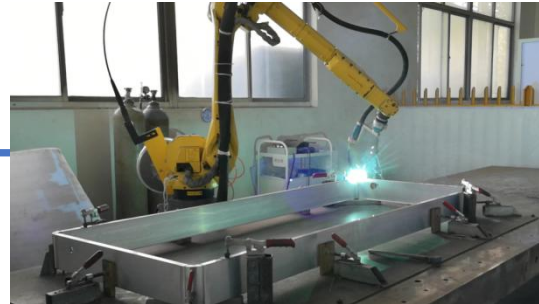
自动化激光切割  
Automatic laser cutting



自动化喷塑  
Automatic powder spraying



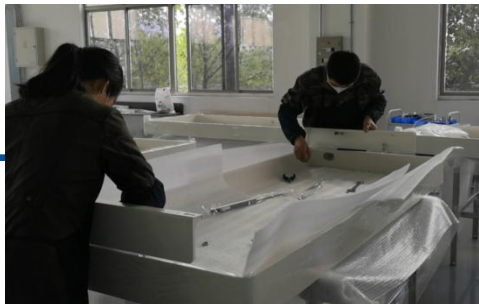
自动化打磨  
Automatic grinding



自动化焊接  
Automatic welding



数控折弯  
Automatic bending



组装  
Assembling



检验  
Inspection

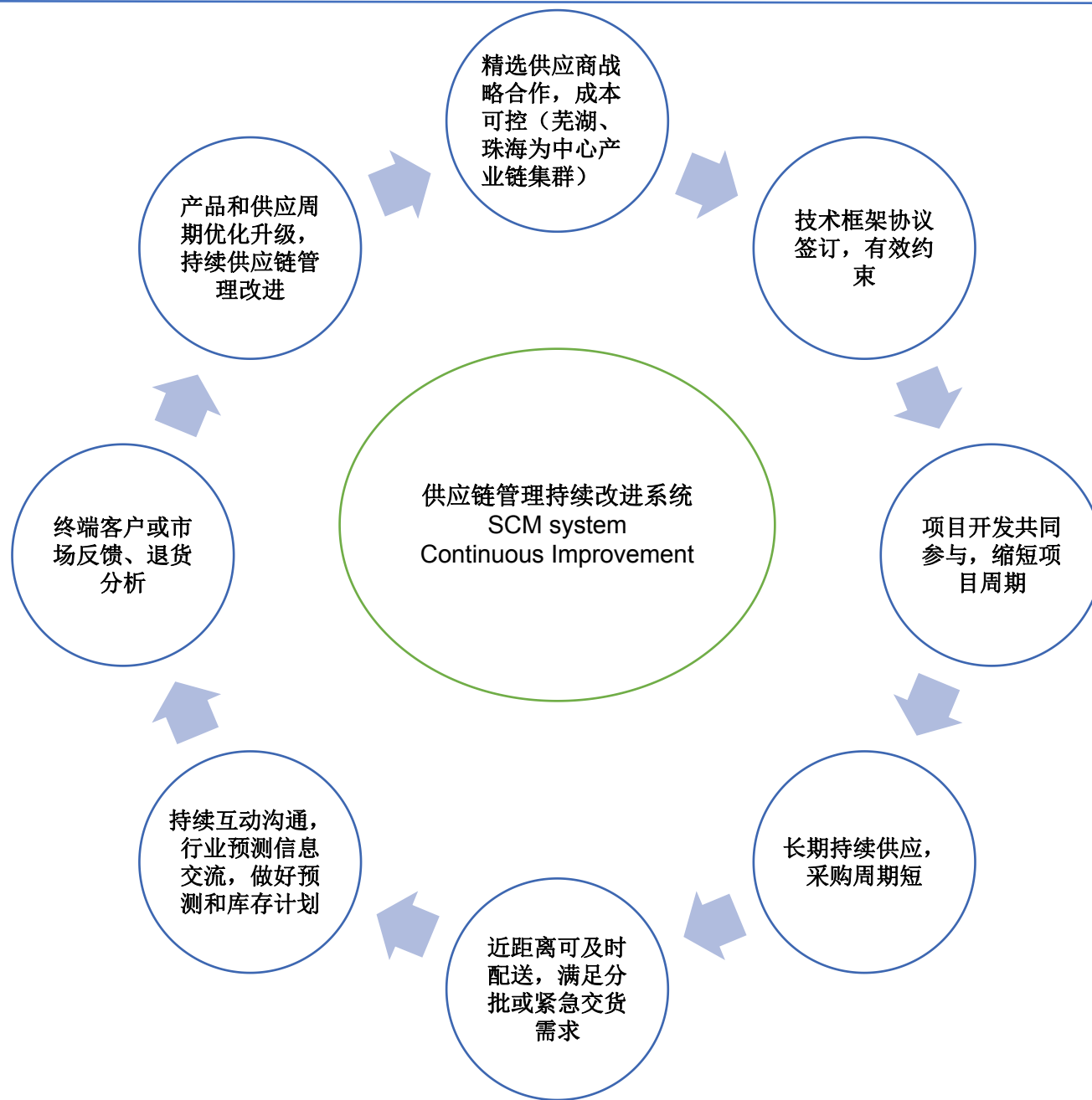


包装  
Packing



发货  
Delivery







# 合作项目

Cooperation Project

## 第四部分 PART FOUR



协普销售地图  
SHIPE SALES MAP

2015年至今，与法国大西洋船厂合作，成为RCL邮轮及MSC邮轮项目的镜柜与镜灯系列产品的供应商。

---

Since 2015, cooperation with Chantiers de l'Atlantique for the RCL cruise and MSC cruise project of supplying the mirror cabinet and mirror light series.



2018-2019年，完成豪华客滚船中华复兴号K36项目的折叠床系列产品的供货。

---

2018-2019, complete the supply of the Pullman bed series products for project K36 of Zhonghua Fuxing Ship.



2019年-2021，完成维京游轮NB488项目的折叠床、沙发床系列产品的供货。

---

2019-2021, complete the supply of the Pullman bed series and sofa bed series products for project NB488 project of Viking Line.

2019年至今，成为极地游轮项目的双层床、单层床及钢丝床等产品的供应商。

Since 2019, cooperate with I.S. MÄKINEN OY for the polar cruise project of supplying the steel bunk bed, steel single-berth bed and steel wire bed.



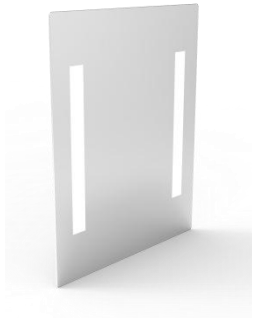
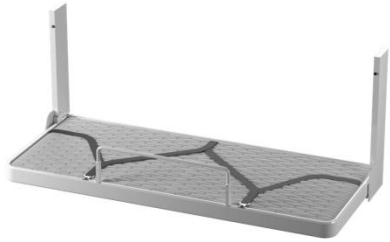
2020年至今，与瑞玛集团合作，成为TT LINE系列船的折叠床、镜柜及灯具系列产品供应商。

Since 2020, signed cooperation with R&M Group for the TT LINE project of supplying the Pullman bed, mirror cabinet series and mirror light series.

2021年至今，与瑞玛集团合作，成为STENA LINE 及 FINNLINES 系列船的折叠床、沙发床、镜柜及灯具系列产品供应商。

---

Since 2021, signed cooperation with R&M Group for the STENA LINE and FINNLINES project of supplying the Pullman bed, sofa bed, mirror cabinet series and mirror light series.







## 我们的优势

- 1. 人才优势:** 我们拥有年轻又优秀的管理团队和职工队伍，能快速适应并响应市场和客户需求和变化，给予客户完善的售前、售中和售后服务系统；
- 2. 硬件优势:** 功能齐备的自有厂房和较为先进的生产设备和检测设备，持续加大投入，不断引入和自制新型设备，优化和提升产品品质和效率；
- 3. 经验优势:** 拥有豪华邮轮、客滚船和出口配套经验，接近万套折叠床生产经验和数十万套镜面箱、镜前灯生产经验，协普推陈出新的脚步永不停止；
- 4. 品牌优势:** 协普品牌在国内高端船舶配套市场拥有很高知名度，占据80%以上国内主流市场，主流配套产品也已在海外出口市场得到广泛认可。
- 5. 经营优势:** 源头工厂，从设计、来料到组装等一整套完整工序都是在我们工厂独立完成，且关键工序都采用自动化生产，生产一致性和稳定性高，成本可控；
- 6. 体系优势:** 高标准的国军标质量管理体系高于一般ISO9000管理体系要求，高端产品按照国军标体系运行，能够保证产品的品质和质量的稳定。



## Our Advantage

- 1. Talent advantage:** We have a young and excellent management team and staff, can quickly adapt to and respond to market and customer needs and changes, to give customers a perfect pre-sale, sales and after-sales service system;
- 2. Hardware advantage:** With self-owned factory and advanced production equipment and testing equipment, we will continue to increase investment, introduce and manufacture new equipment to optimize and improve product quality and efficiency;
- 3. Experience advantage:** With experience in luxury cruises, ro-pax passenger ships and export business, nearly 10K sets of pullman bed production experience and 500k of mirror cabinets, mirror light production experience, SHIPE will never stop pushing forward with new steps;
- 4. Brand advantage:** SHIPE brand in the domestic high-end ship matching market has a high visibility, accounting for more than 80% of the domestic marketing share, also have been widely recognized in overseas export markets;
- 5. Management advantage:** We're the original factory, from the design, material incoming to the assembly of a complete set of processes are completed independently in our plant, and key processes are almost automated production, which can prove the production consistency and stability as well as cost control;
- 6. System Control advantage:** As a high-standard quality management system enterprise, which exceed the general ISO9000, high-end products in accordance with the GJB standard system to much more strictly ensure product quality and stability.

折叠床系列模拟舱

Pullman bed series mock up cabin



欢迎参观考察和指导，协普推陈出新的脚步永不停止。

Welcom your warm visiting and instructions, we will never stop pushing forward new and improvements.

# 2023



## 期待与您达成合作

Looking Forward To Working With You

地址：中国（安徽）自由贸易试验区芜湖片区永昌路10号  
Add: No.10 Yongchang Road, Wuhu District, Pilot Free  
Trade Zone (Anhui) China, 241000  
Tel: 86-553-5223351 Phone: 86-13675539879  
Website: [www.shipe126.com](http://www.shipe126.com)  
E-mail: [xp321520@163.com](mailto:xp321520@163.com)